

# *Solid Pewter Ornaments of Historic Glastonbury*

Cub Scout Pack 241 is offering the 27<sup>th</sup> series of commemorative ornaments featuring historic buildings, locations and events in Glastonbury. The 2017 ornament depicts **The Glastonbury Trolley**

*The Hartford Street Railway was a high-speed interurban electric railway system dating back to 1892. The system was made up of 40 miles of track connecting railway systems across the Hartford area. This important railway was the only link between the entire street railway network in New England. This connection allowed travel between New York and Boston by trolley. Despite having a connected network between cities, many intercity trips required changes of cars along the way. Most trackage was in or alongside public roads. A single line crossed the Bulkeley Bridge into East Hartford, where lines radiated north to East Windsor Hill and south to South Glastonbury Main Street. Trolley service was discontinued in 1926 as the company went into foreclosure due to mounting debt.*

**Ornaments in the series include:**

- |                                 |                                  |                                      |
|---------------------------------|----------------------------------|--------------------------------------|
| 2017: The Glastonbury Trolley   | 2008: Cotton Hollow Mill         | 1999: Gideon Welles House            |
| 2016: The Glastonbury Citizen   | 2007: Skeleton Racer             | 1998: Welles-Chapman Tavern          |
| 2015: Katz Hardware Store       | 2006: The Exact                  | 1997: High Street School             |
| 2014: Police Department         | 2005: Harriman Motor Works       | 1996: Civil War Monument             |
| 2013: Fire Department Engine #1 | 2004: J.B. Williams Soap Factory | 1995: Welles-Turner Memorial Library |
| 2012: The Fountain Green        | 2003: Blacksmith Tavern          | 1994: Welles-Shipman Ward House      |
| 2011: Tomahawks                 | 2002: East Glastonbury Library   | 1993: Glastonbury's First Church     |
| 2010: Apple Harvest             | 2001: South Glastonbury Library  | 1992: Glastonbury-Rocky Hill Ferry   |
| 2009: Addison Mill              | 2000: Old Cider Mill             | 1991: Old Town Hall                  |

*Images of all ornaments are found on the back of this order form*

**About Our Ornaments:**

Each year Pack 241 designs a new pewter ornament featuring a different historic building, location or event. Hand cast by Woodbury Pewter in Woodbury CT, the ornaments are about 2 ¼ inches in diameter. Your donation supports Cub Scout Pack 241 activities such as our camp outs, guest speakers, trips and pinewood derby race

**To Purchase Your Ornament(s):**

**Visit Katz Hardware on Main Street for the 2017 Ornament. For all our Ornaments visit Emmy Lou's on Hebron Ave in Glastonbury Or mail this form to: Cub Scout Pack 241, c/o Paul Wechsler, 286 Buttonball Lane. Glastonbury CT 06033. Each ornament is \$9. A full set is \$207, a 15% discount. Send questions to:**

[cubscouts@pack241.org](mailto:cubscouts@pack241.org)

***View current and past ornaments on the web at: [www.pack241.org](http://www.pack241.org)***

*Detach below and mail with check*

**Cub Scout Fund Raiser:**

**Historic Glastonbury Pewter Ornaments**

To order Historic Glastonbury Pewter Ornaments, complete this order form and mail it with a check made out to "Pack 241"

**Name:** \_\_\_\_\_ **Phone:** \_\_\_\_\_ **Email:** \_\_\_\_\_

**Address:** \_\_\_\_\_

**Number of ornaments requested:**

2017: _____	2012: _____	2007: _____	2002: _____	1998: _____	1994: _____
2016: _____	2011: _____	2006: _____	2001: _____	1997: _____	1993: _____
2015: _____	2010: _____	2005: _____	2000: _____	1996: _____	1992: _____
2014: _____	2009: _____	2004: _____	1999: _____	1995: _____	1991: _____
2013: _____	2008: _____	2003: _____			

**Name of Scout That Told You About Our Ornaments (if known):** \_\_\_\_\_

# 27 Years of Historic Glastonbury Holiday Ornaments



**Glastonbury Trolley  
2017**



**Glastonbury Citizen  
2016**



**Katz Hardware Store  
2015**



**Police Department  
2014**



**Fire Department Engine #1  
2013**



**Fountain Green  
2012**



**Tomahawks  
2011**



**Apple Harvest  
2010**



**Addison Mill  
2009**



**Cotton Hollow Mill  
2008**



**Skeleton Racer  
2007**



**The Exact  
2006**



**Harriman Motor Work  
2005**



**J.B. Williams Soap Factory  
2004**



**Blacksmith Tavern  
2003**



**E. Glastonbury Library  
2002**



**S. Glastonbury Library  
2001**



**Old Cider Mill  
2000**



**Gideon Welles House  
1999**



**Welles-Chapman Tavern  
1998**



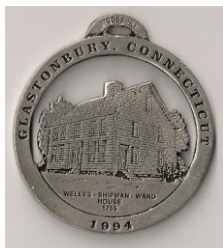
**High Street School  
1997**



**Civil War Monument  
1996**



**Welles-Turner Memorial Library  
1995**



**Welles-Shipman House  
1994**



**Glastonbury First Church  
1993**



**Glastonbury-Rocky Hill Ferry  
1992**



**Old Town Hall  
1991**